



FOR R-PANEL ROOF SYSTEMS

All PowerMounts™ Include PV Cube, Threaded Anchor & 4 Fully Gasketed Stainless Steel Fasteners

UNIVERSAL PV CUBE™

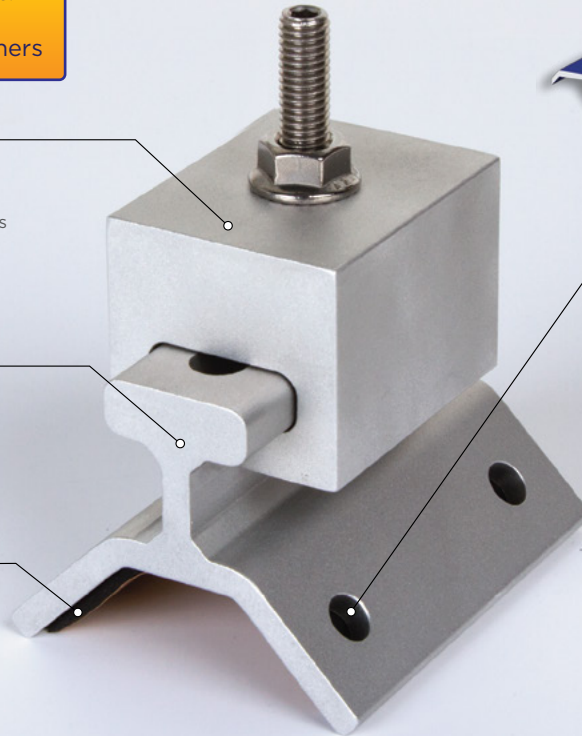
- Utilizes PowerGlide™ Technology
- Robust Design for Unparalleled Strength
- Multiple Solar Module Attachment Options
- 6061-T6 Aluminum
- Works On All PowerMount Applications

POWERMOUNT™

- Utilizes PowerGlide™ Technology
- Fits Majority of R-Panels
- Up to 2" Adjustment for Easy Install
- 6061-T6 Aluminum

EPDM SEAL™

- EPDM Gasket
- Premium Water Tight Seal



ATTACHMENT

- 4 Points of Attachment
- 14x1" SS Single Piece Cap and Seal with EPDM Washer
- Angled Attachment for Maximum Uplift Strength

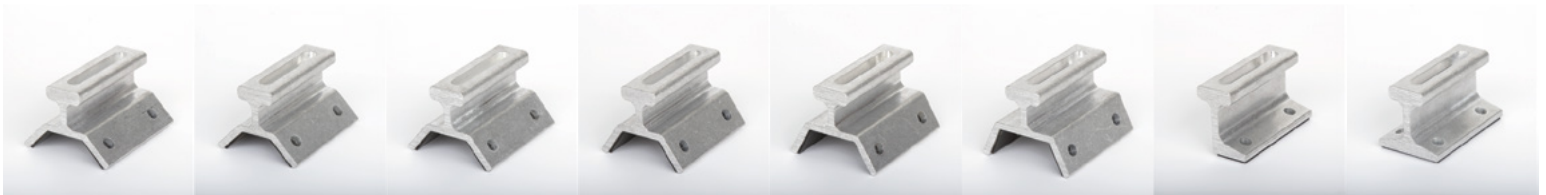


STAINLESS FASTENER W EPDM WASHER
 Compatible With Metal & Wood Applications

Introducing the new Patent-Pending PowerMount™ to be used with virtually any R-Panel Roof System. The PowerMount™ utilizes PowerGlide™ Technology that gives the installer up to 2" of precise adjustment during installation in the field. Use the PowerMount™ with our Universal L-Foot to attach to any solar racking system or go railless and utilize our innovative Solar Connection Kit with GroundBonding™ Technology that is UL 1703 and UL 2703 listed and approved.



FAMILY OF AVAILABLE POWERMOUNT™ CLAMPS



PowerMount™-4510

PowerMount™-4575

PowerMount™-5000

PowerMount™-5500

PowerMount™-6000

PowerMount™-6500

PowerMount™-9000

PowerMount™-1800